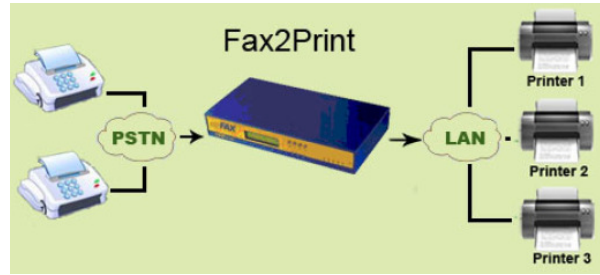


Fax to Print

All incoming faxes can be configured to be printed automatically via network printer similar to traditional printing in your fax machines.



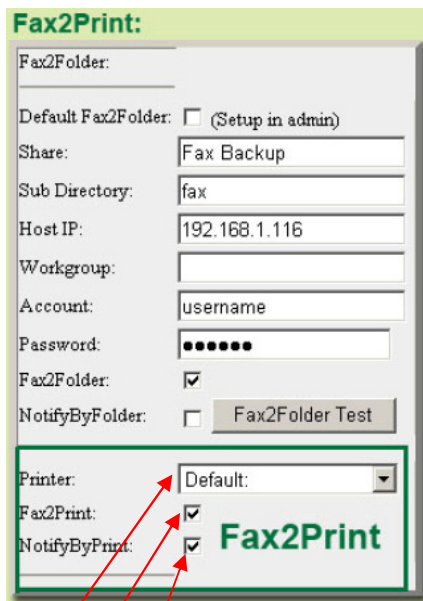
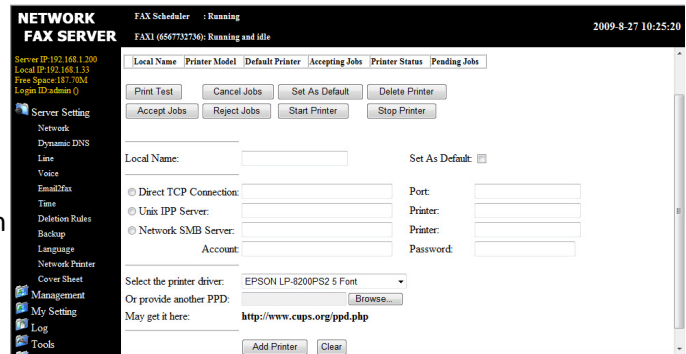
Setup procedure:

1. Add printer Login by admin input Local Name and select the connection option.
2. Select the printer driver.
3. Test printer. Stop Printer. Delete Printer
4. Login to fax server, choose one added printer and enable Fax2print.

Features

- Automatic printing of incoming faxes on network printer
- User can add more than one printer, when you enable Fax2Print you can use any printer that is pre-configured by your administrator.
- It supports printing of outbound fax.

Add Printer:



- Check to enable Notify by Print
- Check to enable Fax to Print
- Select your default printer here

Application:

- All printers are added by admin as users do not have the right. When user wants to use Fax2print, user can enable it in user account settings.
- Each account will have its own printer configured. The account can be an individual or a department.
- There are 3 printer connections modes to choose from:
 - Direct TCP Connection:** Select this connection allows you to use the printer's network share name and default port is 9100.
 - UnixIPP Server:** Based on IPP network print protocol, connect to printer via Internet, home or office network.
 - Network SMB Server:** General share method in Windows or Linux Samba.